

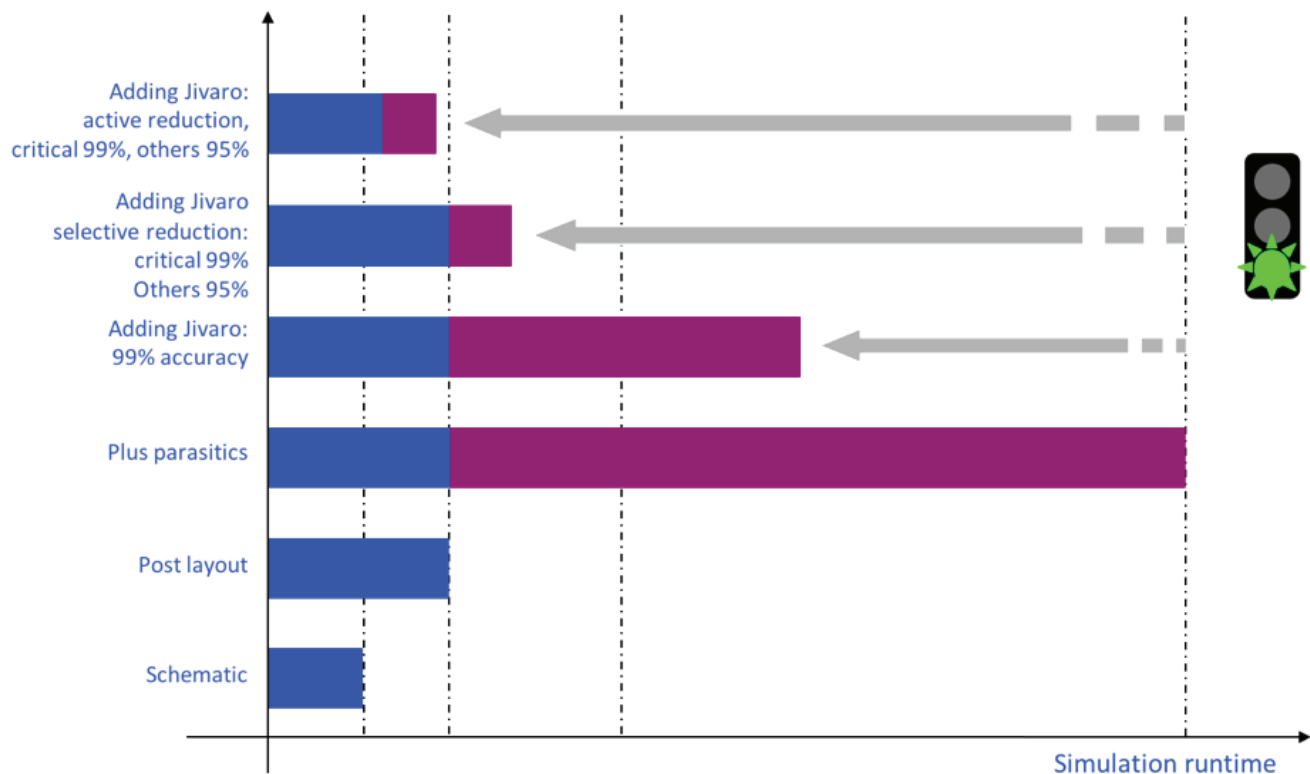
Jivaro

Parasitics Reduction and More

Jivaro is a solution dedicated to the reduction of parasitic networks. It helps backend physical verification teams (SPICE or FastSpice users) speeding up post layout simulation of huge parasitic extracted circuits, while keeping a very high accuracy.

Jivaro applies an ingenious mathematical approach to perform Model Order Reduction (MOR). Contrary to any heuristic technology, Jivaro allows to trade-off between accuracy and reduction with the user controlling the benefits. Jivaro can be applied with different thresholds on different parts of the design to maximize reduction. It can also offer more than MOR through the reduction of the number of active devices.

Jivaro has been proven to dramatically accelerate IC simulation while preserving an outstanding accuracy and has been adopted at leading IDM companies and fabless worldwide for technology nodes at 130nm and below. Jivaro was added to TSMC's Custom Reference Flow flow starting with 28nm. Jivaro is known to be used for designs at technology nodes of 10nm.



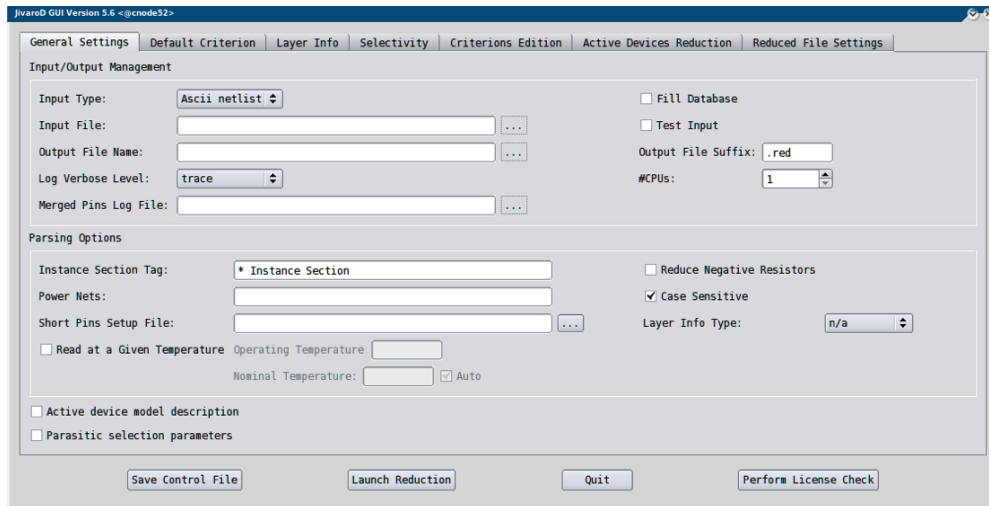
Jivaro is able to deliver various reduction plans.

Features

- All types of parasitic netlist components: R, RC, RCC, RLC, RLCK, controlled sources
- Supports the following I/O formats: DSPF, SPEF, SPICE3, HSPICE, SPECTRE, CalibreView, reads and writes OpenAccess databases
- Supports temperature-dependent parasitic networks
- Can be applied differently on selected nets or sub-circuits within the hierarchy. Selection of the different nets can be along a path
- Compatible with all major EDA tools
- Additional capabilities for path-based reduction
- Multi-finger reduction
- Supports negative resistors

Options

- Multi-threading
- Support of inductance and mutual inductance
- Seamless integration within the Cadence Virtuoso® platform (several possibilities)
- Graphical User Interfaces to pilot the reduction options
- Inline binaries for batch runs



Jivaro GUI: parameters setup window.

Supported platforms

- Red Hat Enterprise Linux 5, 6: x86, x86_64
- SuSE Enterprise Linux 11: x86, x86_64

SILVACO

HEADQUARTERS

4701 Patrick Henry Drive, Bldg. 2
Santa Clara, CA 95054 USA
Phone: 408-567-1000
Fax: 408-496-6080

CALIFORNIA

MASSACHUSETTS
TEXAS

sales@silvaco.com
masales@silvaco.com
txsales@silvaco.com

JAPAN

EUROPE
FRANCE

jpsales@silvaco.com
eusales@silvaco.com
eusales@silvaco.com

KOREA

TAIWAN
SINGAPORE

krsales@silvaco.com
twsales@silvaco.com
sgsales@silvaco.com
CHINA
cnsales@silvaco.com



WWW.SILVACO.COM

Rev 013118_03